



*EEOICPA Subtitle D*

*Presentation to  
Advisory Board on Radiation and Worker Health*

**Tom Rollow**

**August 24, 2004**



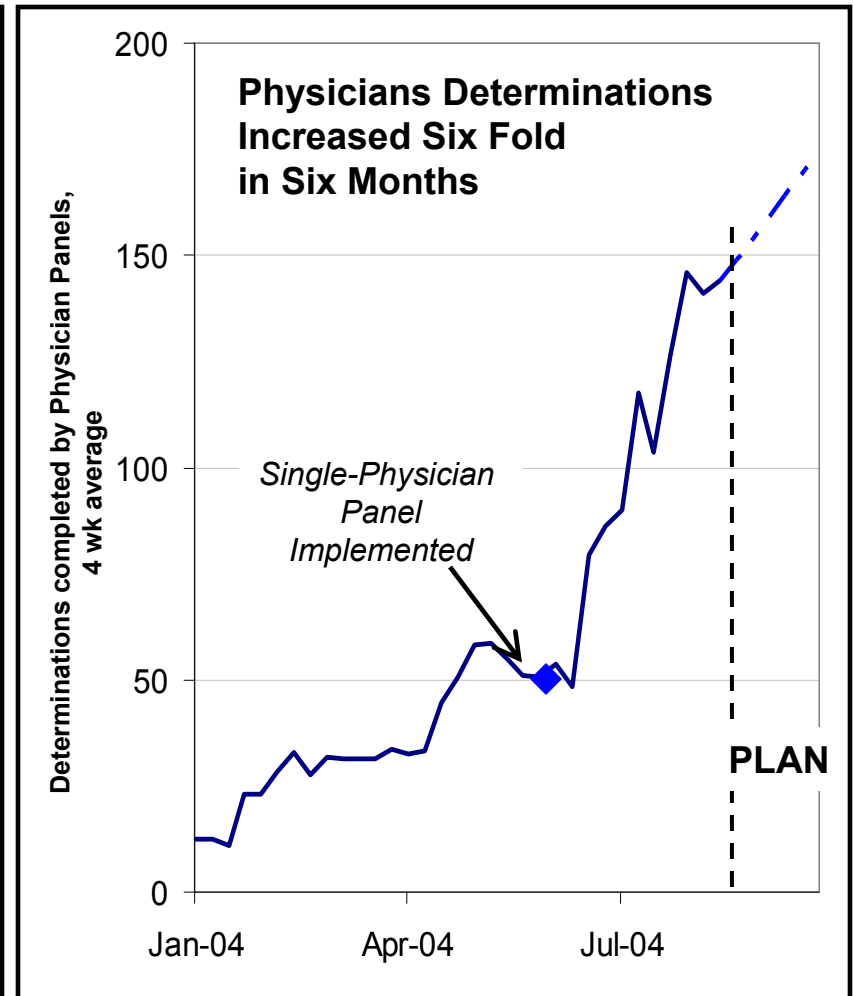
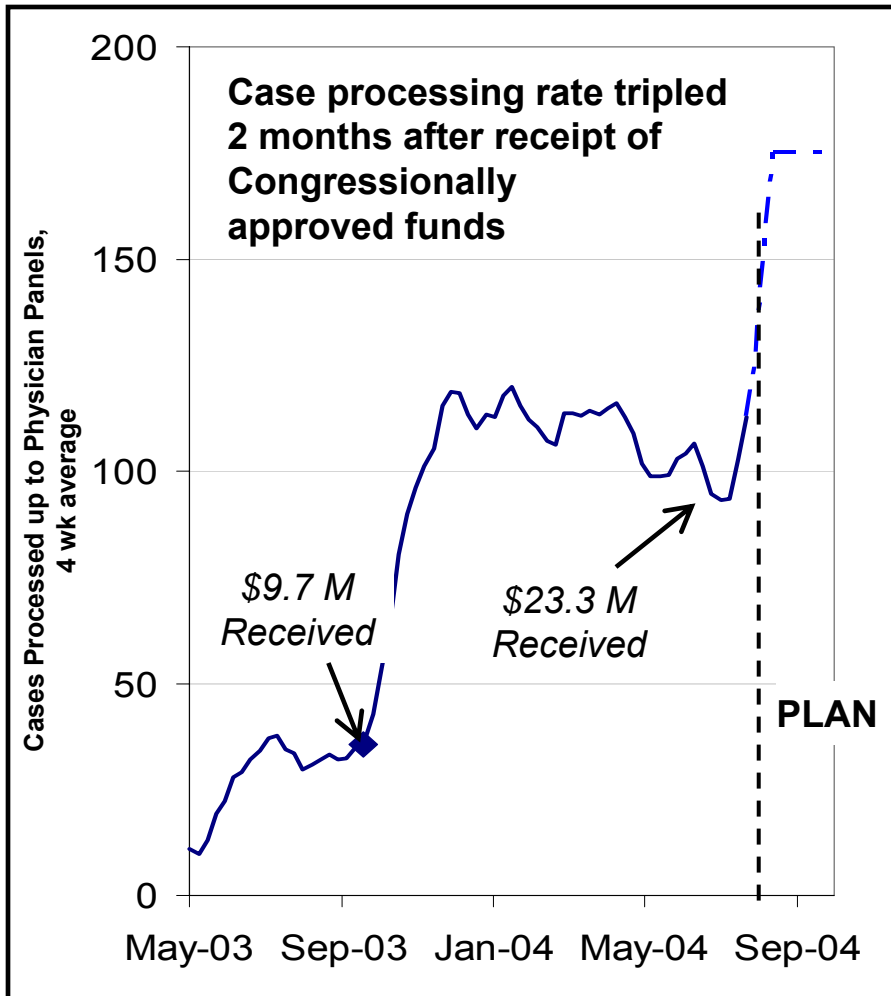
## *7,000 Cases Processed, 70% in Last Six Months*

- DOE already completely processed 3,143 cases
  - 12.6% of total
  - Not 3% as has been claimed
- An additional 3,258 in Physician Panel process
  - DOE processing completed
  - Brings DOE completion rate to 25.6%
- 1,001 completed by DOE, waiting on applicant review
- **DOE processing complete on 29.6%, almost all in last six months**

	<u>w/e 8/13/04</u>	<u>Chg from Prev. Week</u>
<b>Total Cases Received at OWA</b>	<b>25,037</b>	75
<b>Total Cases Completed</b>	<b>3,143</b>	85
Positive Panel Findings (418)		26
Negative Panel Findings (743)		46
Ineligible Applications (1648)		17
Cases Withdrawn by Applicant (334)		(4)
<b>Cases Currently in Physician Panel Process</b>	<b>3,258</b>	0
Cases Awaiting Panel Assignment (1235)		(238)
Cases at Physician Panel (2023)		238
<b>Cases Developed; Awaiting final review by applicant</b>	<b>1,001</b>	27
<b>Cases Being Developed</b>	<b>12,043</b>	247
Cases Under Initial Review (1027)		5
Cases Under Research (10927)		207
Cases Under Construction (89)		35
<b>Cases Awaiting Development</b>	<b>5,592</b>	(284)

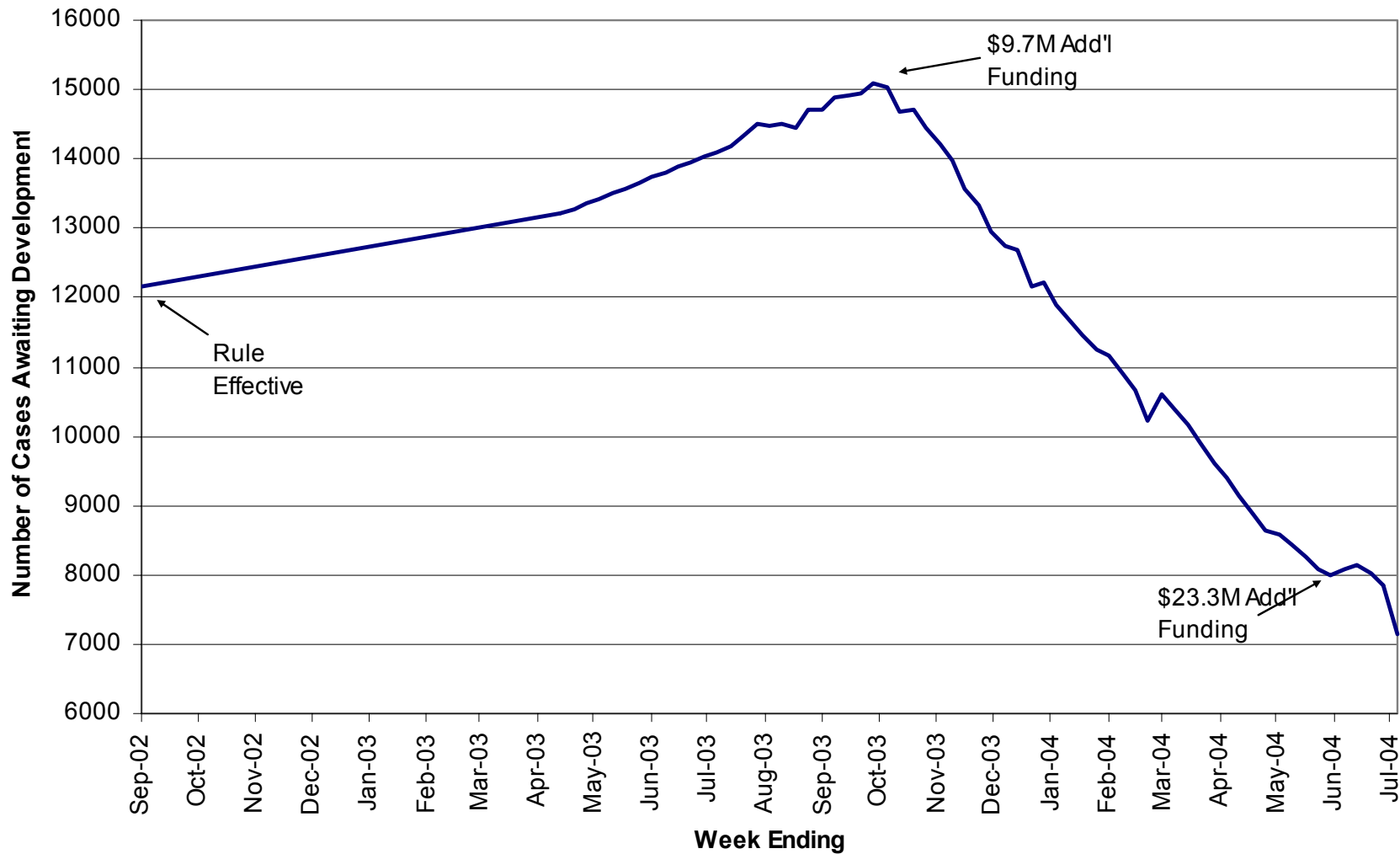


# DOE Now on Track





# Cases Waiting Processing





# *DOE's Path Forward is Credible, Comprehensive, and Eliminates the Backlog in 2006*

## **Regulation (10 CFR Part 852)**

**Done**

- Physicians on panels: 3 to 1
- Multiple reviews for negatives

## **Budget**

***Still short \$10M, but  
\$23M is a great start***

- '04: \$33M appropriations transfer requested, \$23M provided to date
- '05: \$43M budget request

## **Legislation**

***In House NDAA Bill***

- Remove physician pay cap
- Expand hiring authority
- Eliminate unnecessary State MOU requirement

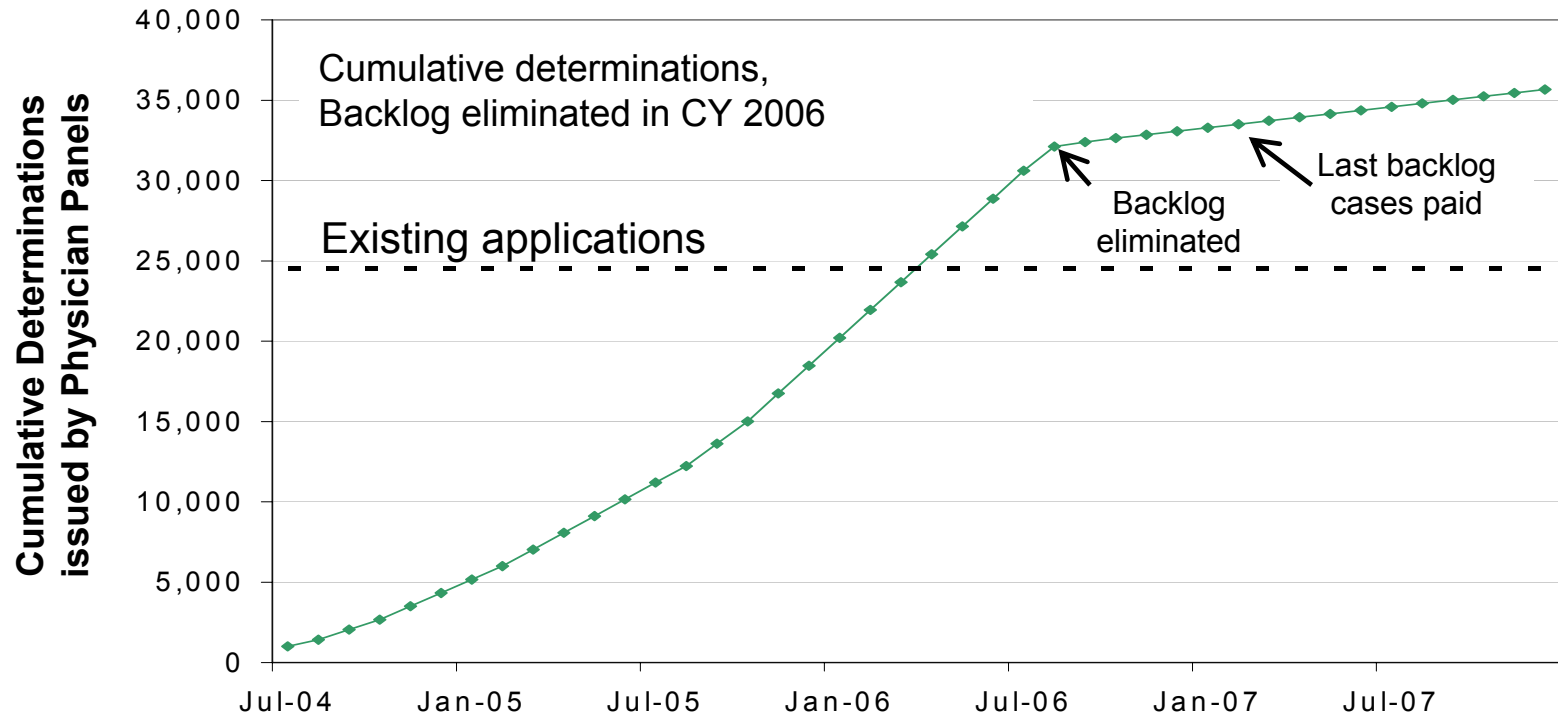
## **Process changes**

***Done or in process***

- Increased physician recruiting
- Tiger team: process improvements
- Reprioritize: easy cases, medical benefits, dose reconstructions
- Advisory Committee



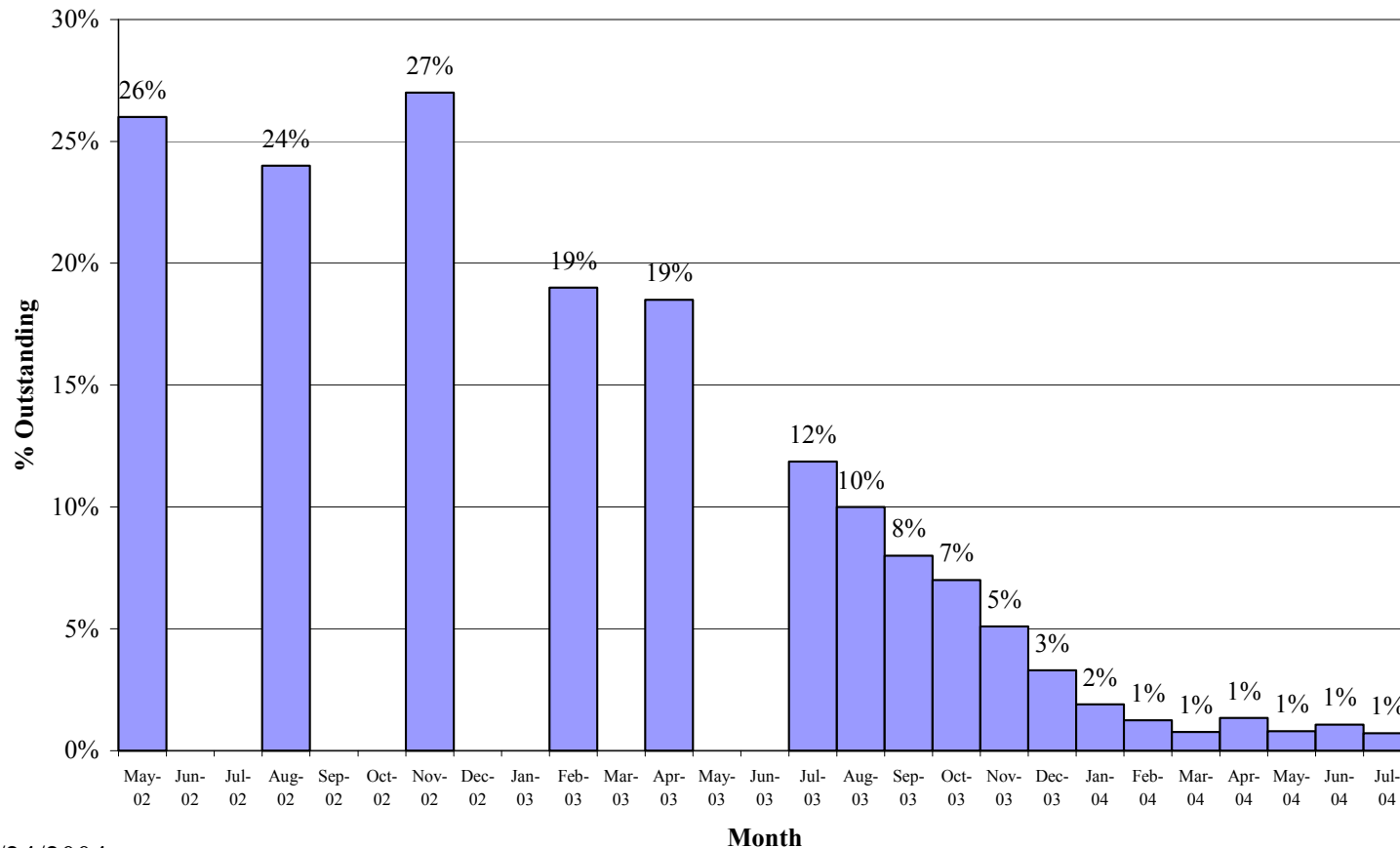
## *DOE's Plan Eliminates the Backlog in CY 2006*





# DOE Provides Data to NIOSH

## Percentage NIOSH Requests more than 60 days old





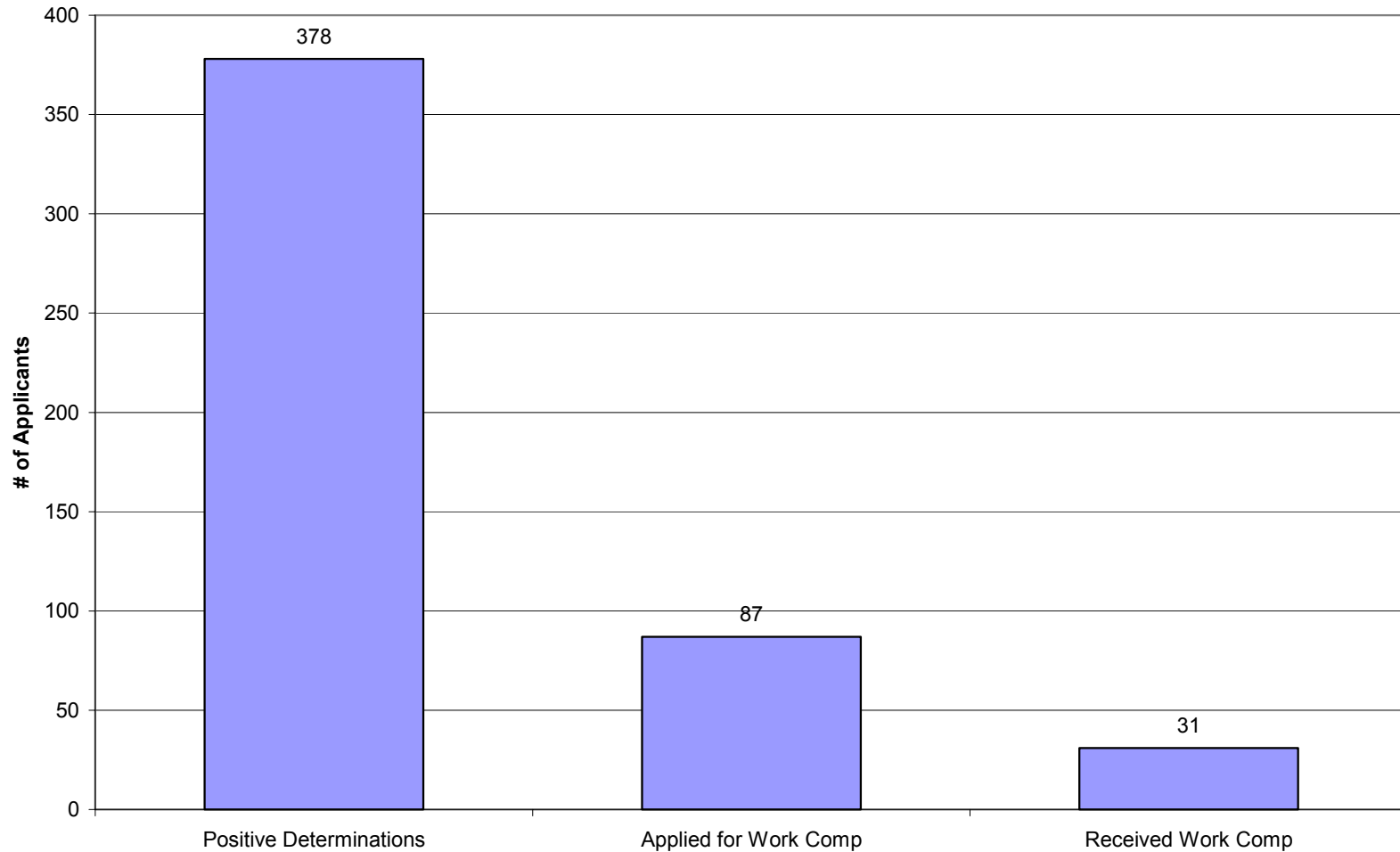
## *NIOSH Provides DOE with Physician Panel Nominees*

- *NIOSH has provided DOE with 250 physician panel nominees*
- *190 physicians are currently serving on panels*



# *Applicants Applying For Work Comp*

**Workers' Compensation Payout as of 7/31/04**

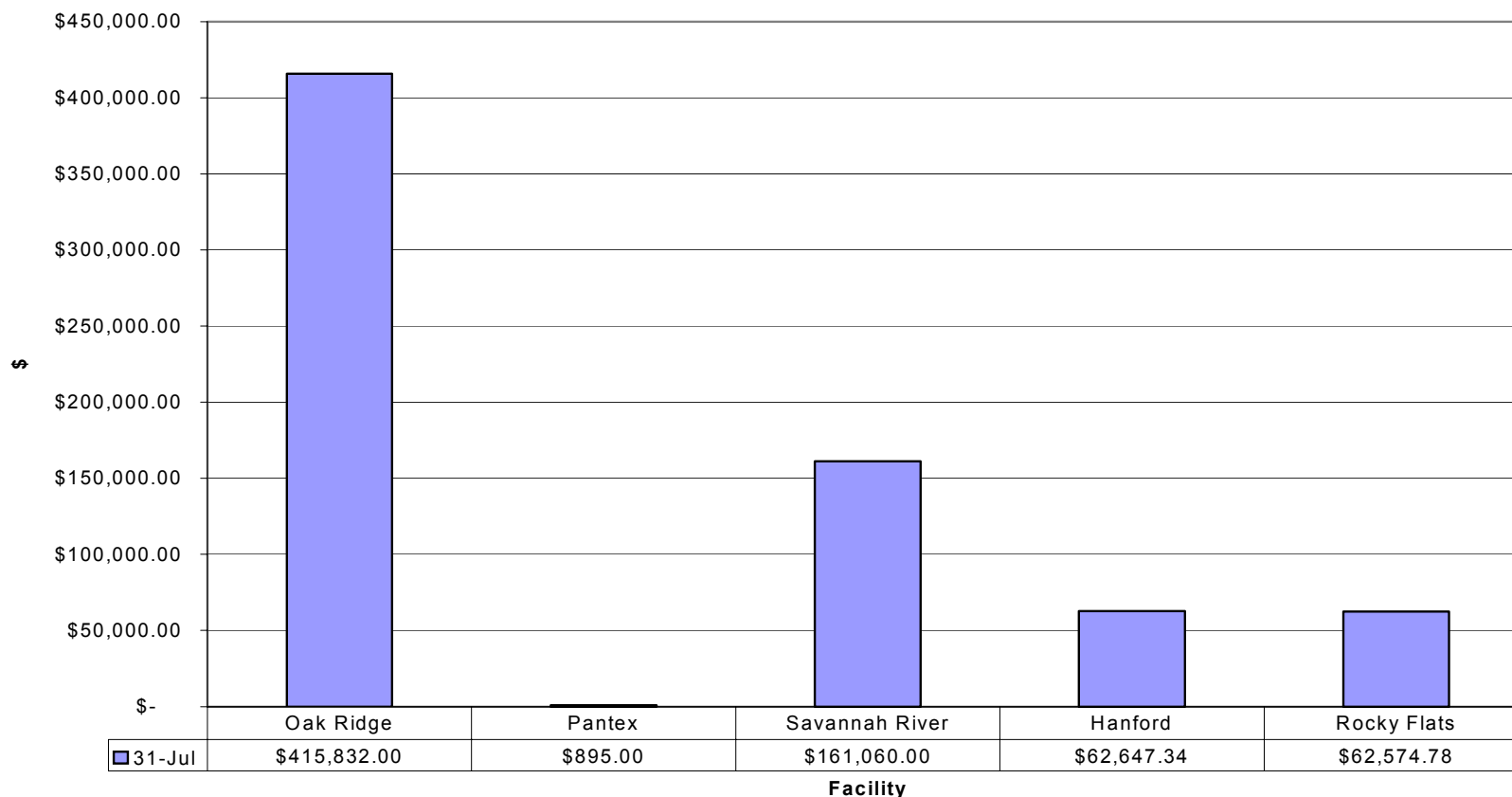


8/24/2004



# Starting to Pay Work Comp Claims

**Workers' Compensation Payout by Facility**



*The total payout for all individuals receiving awards complex-wide at DOE is \$703,009 through July 2004.*



# *EEOICPA Part D Program Statistics for INEEL as of 8/13/04*

<b>Total Cases Received at OWA</b>	<b>948</b>
<b>Total Cases Completed</b>	<b>139</b>
Positive Panel Findings (29)	
Negative Panel Findings (47)	
Ineligible Applications (48)	
Cases Withdrawn by Applicant (15)	
<b>Cases Currently in Physician Panel Process</b>	<b>180</b>
Cases Awaiting Panel Assignment (83)	
Cases at Physician Panel (97)	
<b>Cases Developed; Awaiting Final Review by Applicant</b>	<b>48</b>
<b>Cases Being Developed</b>	<b>494</b>
Cases Under Initial Review (13)	
Cases Under Research (478)	
Cases Under Construction (3)	
<b>Cases Awaiting Development</b>	<b>87</b>



QUESTIONS?